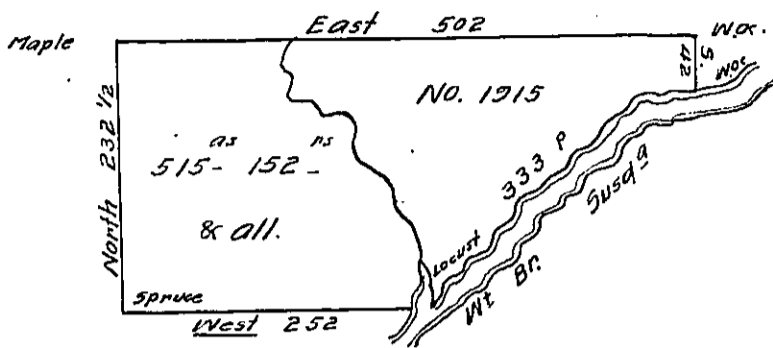


The Course and Distance  
Up the River

- West 31
- S. 80 W. 37
- S. 64 W. 39
- S. 30 W. 90
- S. 49. W 136 Locust  
333 P<sub>s</sub>

Their other Land

Their other Land



Their other Land

Situate on the West branch of Susquehanna River in District No. 3, the Late Purchase, Northumberland County. Survey'd 8<sup>th</sup> Nov<sup>r</sup> 1792 to Robt Morris & Walter Stewart on Warrant dated 20<sup>th</sup> Aug<sup>t</sup> 1792. No. 1915. Containing five hundred and fifteen acres, one hundred and fifty two pers. & allows of six p. cent & c.

John Canan D.S.

Dan<sup>l</sup> Brodhead Esq<sup>r</sup> S.G.

IN TESTIMONY that the above is a copy of the original remaining on file in the Department of Internal Affairs of Pennsylvania, made conformably to an Act of Assembly approved the 16th day of February, 1833, I have hereunto set my Hand and caused the Seal of said Department to be affixed at Harrisburg, this twenty sixth day of December 1905

*La a c r Powers*  
Secretary of Internal Affairs.